



VMware Shutdown Wizard

User's Manual

Table of Contents

1. Introduction	2
2. VMware Shutdown Wizard install, quick start, stop, and uninstall	3
2-1. Install	3
2-2.Quick Start	7
2-3.Stop	8
2-4.Uninstall	9

1. Introduction

VMware Shutdown Wizard is a shutdown software specially designed for VMware system. It will receive the shutdown command from ViewPower Pro or ViewPower to turn off all the running virtual client units with VMware system.

Note: Before installing Shutdown Wizard, please be sure that firewall of ESX OS allows get through via UDP protocol and 31234 port.

Main features:

a. Supported VMware version

1	VMware ESX 3.5 and 4.1
2	VMware ESXi 4.1 and 5.0

b. Compatible version for ViewPower and ViewPower Pro software.

1	ViewPower Pro 1.00 and version above
2	ViewPower 2.07 SP1 and version above

c. Power management pattern.

1	Shutdown
2	Suspend

d. Supported power management pattern with VMware Tools

	Shutdown	Suspend
VMware Tools running	V	V
VMware Tools not running	X	V

e. The shutdown actions executed in virtual OS from VMware Shutdown Wizard

VMware Virtual OS	VMware Tools	Actions
Windows	Installed	Take the shutdown action first. If this shutdown action is not completed in 120 seconds, then it will suspend.
	Not installed	Suspend
Linux	Installed	Shutdown
	Not installed	Suspend
Unix	Installed	Shutdown
	Not installed	Suspend
MAC	Not available	Suspend

2. VMware Shutdown Wizard install, quick start, stop, and uninstall

2-1. Install

Required software: VMware Infrastructure Client.

File name for VMware Shutdown Wizard software: VMwareESXShutdownWizard.tar.gz

1) Upload software to VMware ESX system.

- Execute VMware Infrastructure Client
- Click inventory button from navigation bar to select the main category of virtual machine.

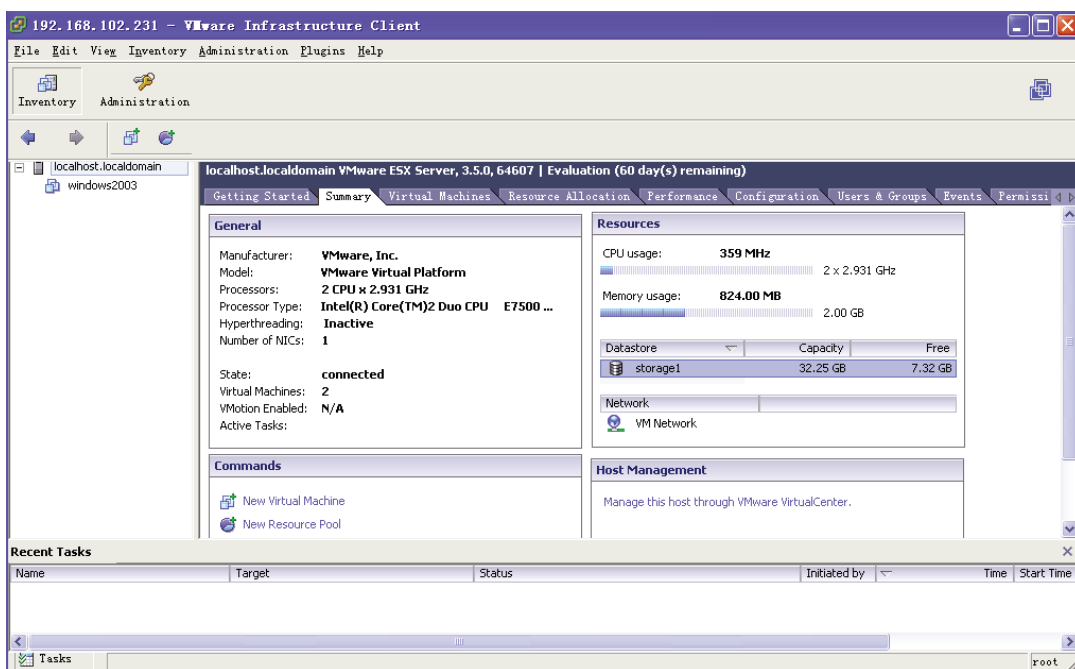



Figure 1.

- Click "Summary" tab. Then, double click Dastore icon  storage1 in "Resources" column as shown above. (storage1: Name of the Dastore which may be different under different configuration). It will pop up Dastore Browser Window as shown in figure 2.

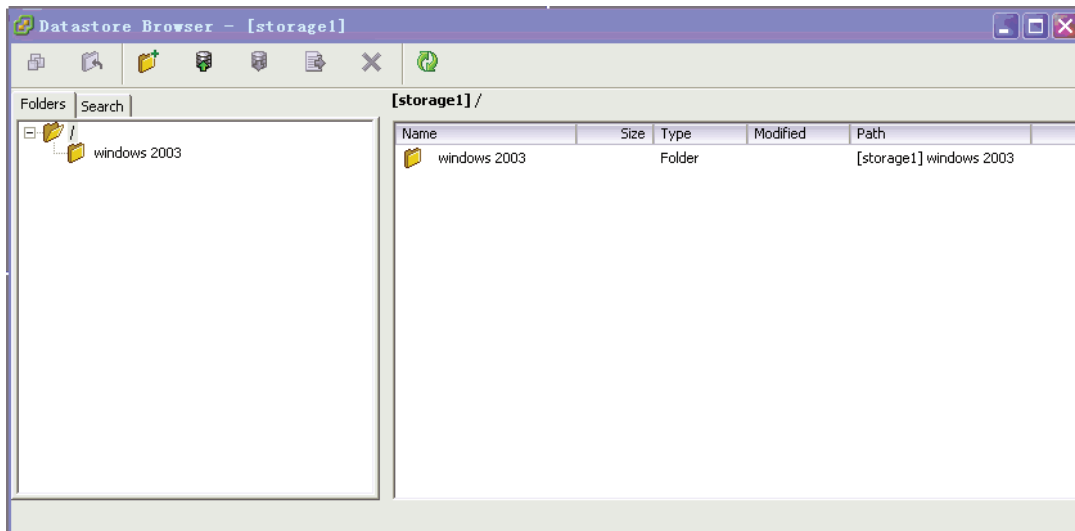



Figure 2.

- d. Click  icon from tool bar, and then select "Upload File..." (Refer to Figure 3)

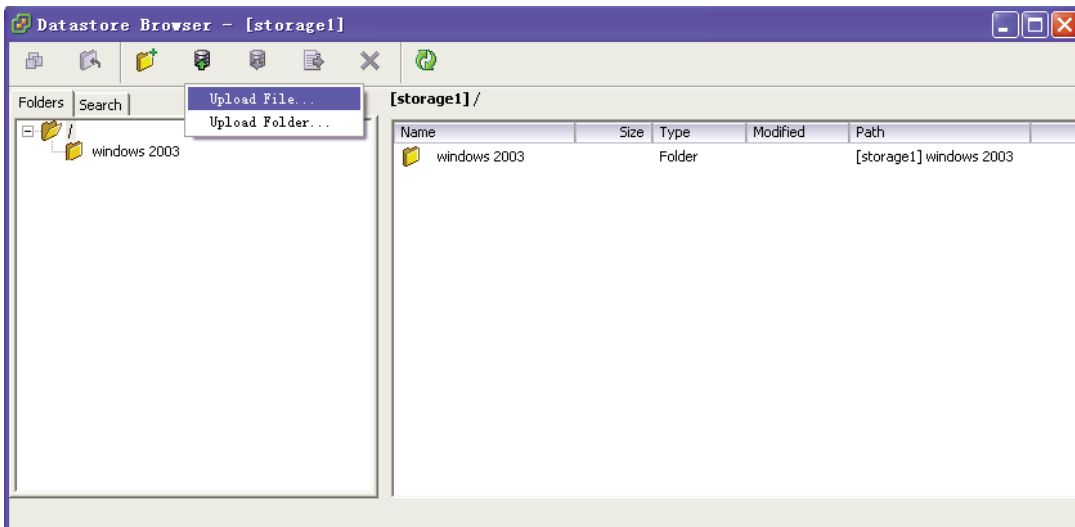


Figure 3.

- e. A dialog of "upload item" will pop up. (Refer to figure 4)

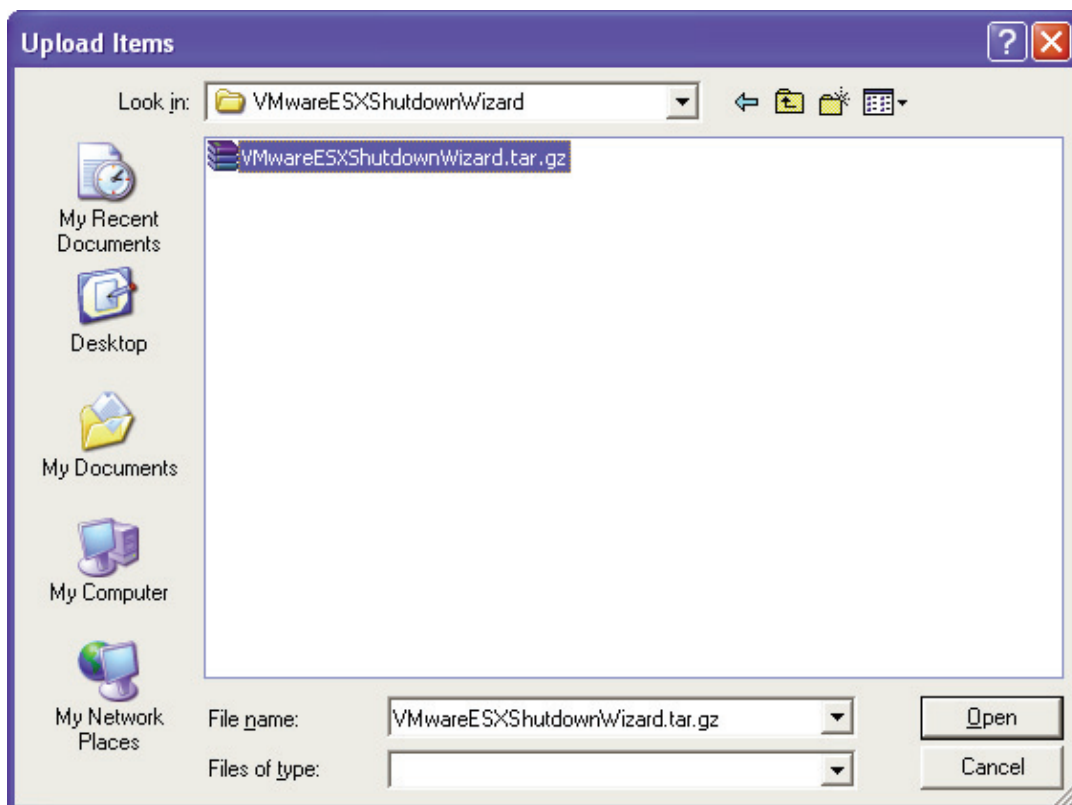


Figure 4. "Upload Items" dialog

- f. Select the VMwareESXShutdownWizard.tar.gz file and click "Open" button to upload the compressed package as shown in Figure 5.

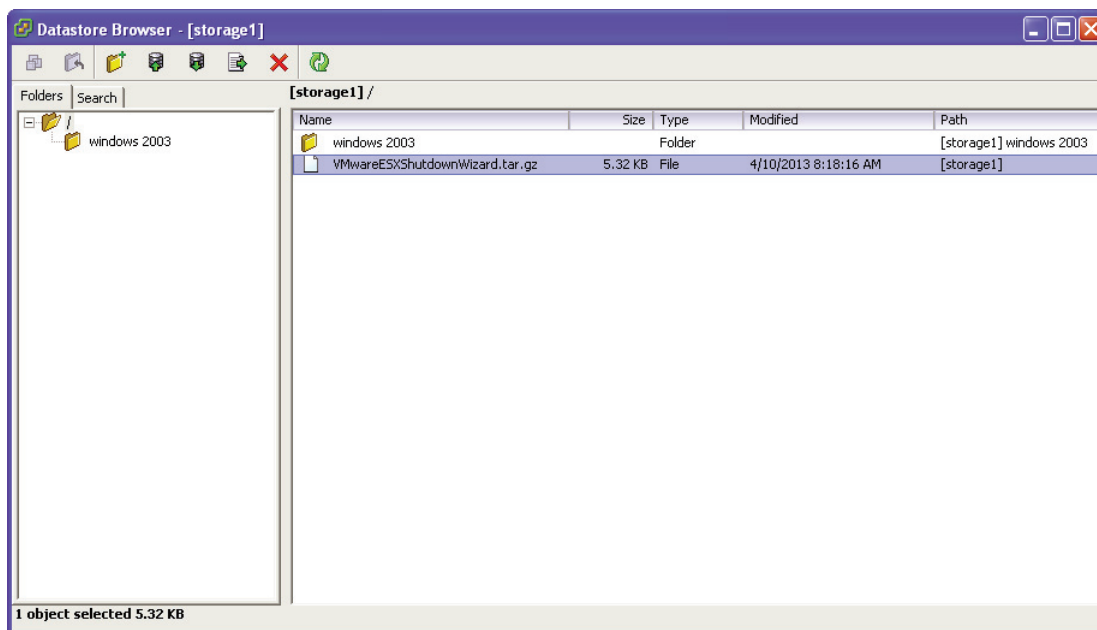
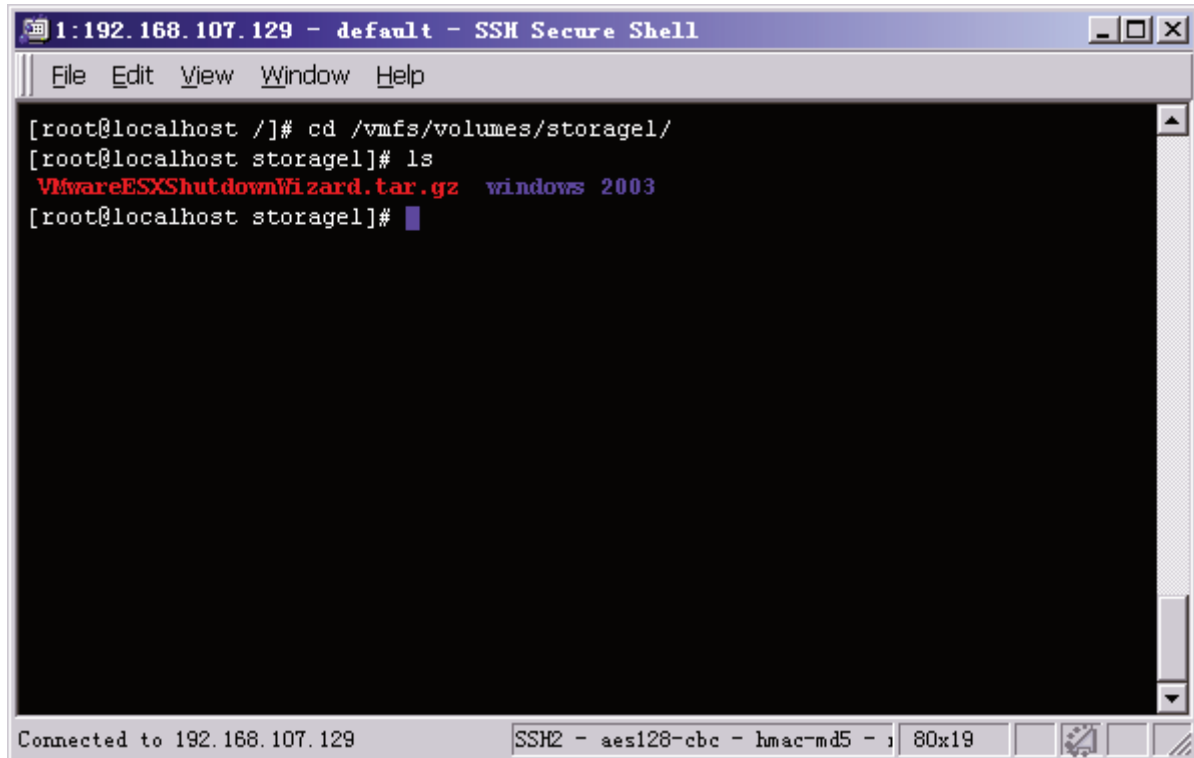


Figure 5

2) Install Software

- a. Log in to Console page of VMware ESX system. Then, enter the following address "cd /vmfs/volumes/storage1/". This can also be varied due to different storage name. (shown in figure 6)

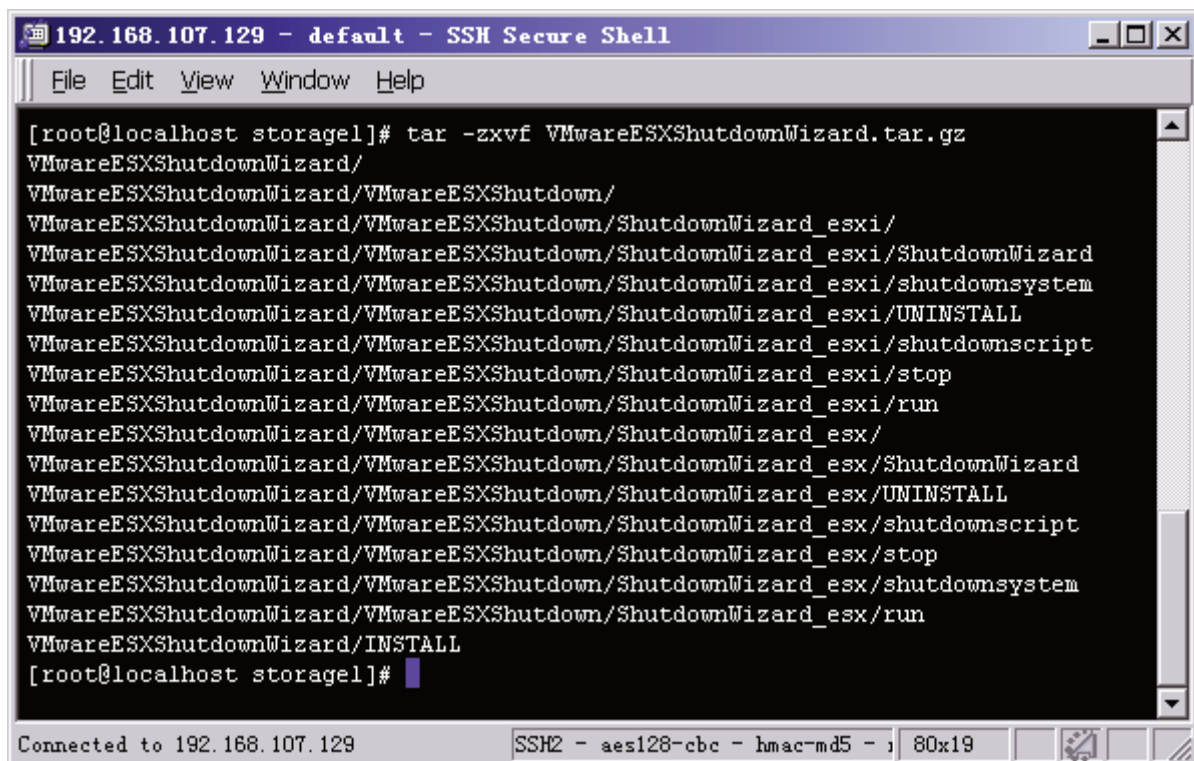


```
1:192.168.107.129 - default - SSH Secure Shell
File Edit View Window Help
[root@localhost /]# cd /vmfs/volumes/storage1/
[root@localhost storage1]# ls
VMwareESXShutdownWizard.tar.gz windows 2003
[root@localhost storage1]#
```

Connected to 192.168.107.129 SSH2 - aes128-cbc - hmac-md5 - 80x19

Figure 6.

- b. Run "tar -zxvf VMwareESXShutdownWizard.tar.gz" command to unzip the compressed file. Refer to figure 7.



```
192.168.107.129 - default - SSH Secure Shell
File Edit View Window Help
[root@localhost storage1]# tar -zxvf VMwareESXShutdownWizard.tar.gz
VMwareESXShutdownWizard/
VMwareESXShutdownWizard/VMwareESXShutdown/
VMwareESXShutdownWizard/VMwareESXShutdown/ShutdownWizard_esxi/
VMwareESXShutdownWizard/VMwareESXShutdown/ShutdownWizard_esxi/ShutdownWizard
VMwareESXShutdownWizard/VMwareESXShutdown/ShutdownWizard_esxi/shutdownsystem
VMwareESXShutdownWizard/VMwareESXShutdown/ShutdownWizard_esxi/UNINSTALL
VMwareESXShutdownWizard/VMwareESXShutdown/ShutdownWizard_esxi/shutdownscript
VMwareESXShutdownWizard/VMwareESXShutdown/ShutdownWizard_esxi/stop
VMwareESXShutdownWizard/VMwareESXShutdown/ShutdownWizard_esxi/run
VMwareESXShutdownWizard/VMwareESXShutdown/ShutdownWizard_esx/
VMwareESXShutdownWizard/VMwareESXShutdown/ShutdownWizard_esx/ShutdownWizard
VMwareESXShutdownWizard/VMwareESXShutdown/ShutdownWizard_esx/UNINSTALL
VMwareESXShutdownWizard/VMwareESXShutdown/ShutdownWizard_esx/shutdownscript
VMwareESXShutdownWizard/VMwareESXShutdown/ShutdownWizard_esx/stop
VMwareESXShutdownWizard/VMwareESXShutdown/ShutdownWizard_esx/shutdownsystem
VMwareESXShutdownWizard/VMwareESXShutdown/ShutdownWizard_esx/run
VMwareESXShutdownWizard/INSTALL
[root@localhost storage1]#
```

Connected to 192.168.107.129 SSH2 - aes128-cbc - hmac-md5 - 80x19

Figure 7.

- c. Key in "cd VMwareESXShutdownWizard" to access the VMwareESXShutdownWizard catalogue. Then run "./INSTALL" to install and auto run the software. Refer to figure 8.

```
192.168.107.129 - default - SSH Secure Shell
File Edit View Window Help
[root@localhost storagel]# cd VMwareESXShutdownWizard
[root@localhost VMwareESXShutdownWizard]# ./INSTALL
VMware Shutdown Wizard V2.10
copy files to /usr/share/VMwareESXShutdownWizard
initialize environment
install over!
[root@localhost VMwareESXShutdownWizard]#
```

Figure 8.

- d. After installation , the installtion path is “/usr/share/VMwareESXShutdownWizard” as shown in Figure 9.

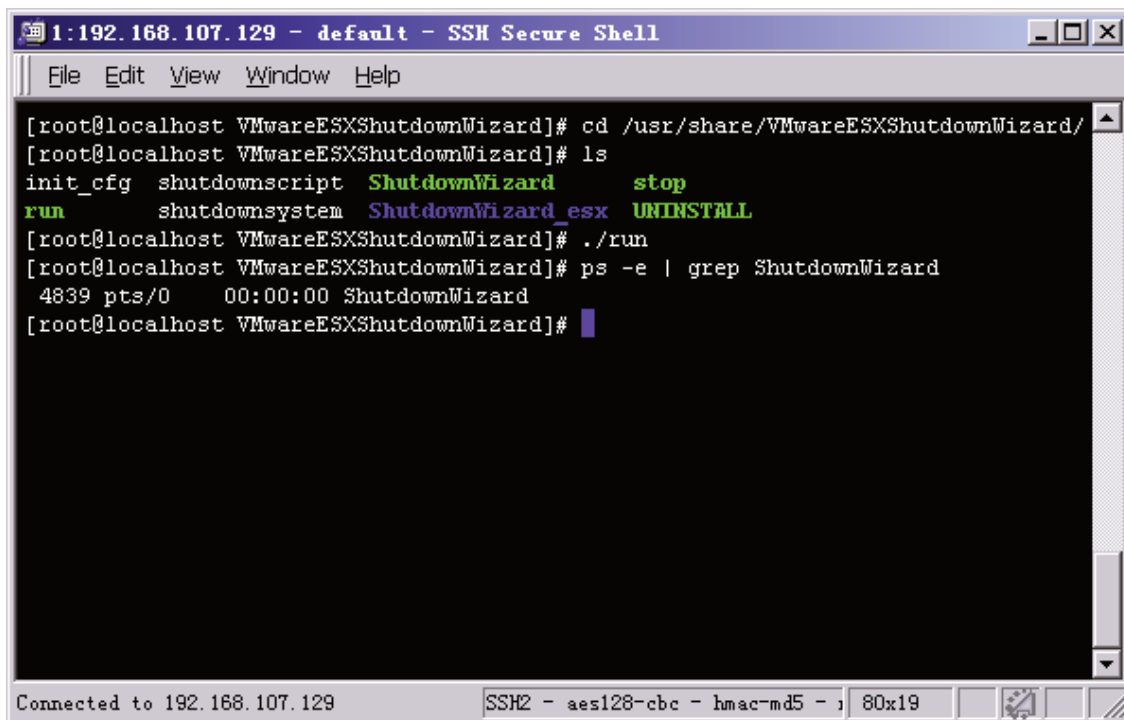
```
192.168.107.129 - default - SSH Secure Shell
File Edit View Window Help
[root@localhost storagel]# cd VMwareESXShutdownWizard
[root@localhost VMwareESXShutdownWizard]# ./INSTALL
VMware Shutdown Wizard V2.10
copy files to /usr/share/VMwareESXShutdownWizard
initialize environment
install over!
[root@localhost VMwareESXShutdownWizard]#
```

Figure 9.

2-2. Quick Start

It will run automatically after installation. If it's not automatically running, you may key in the “ps -e | grep ShutdownWizard”(for ESXi 5.0 : “ps -C | grep ShutdownWizard”) for double checking. Once it's not

running as requested, key in "cd /usr/share/VMwareESXShutdownWizard/" to enter installation menu and then enter "./run" to manually start the software.

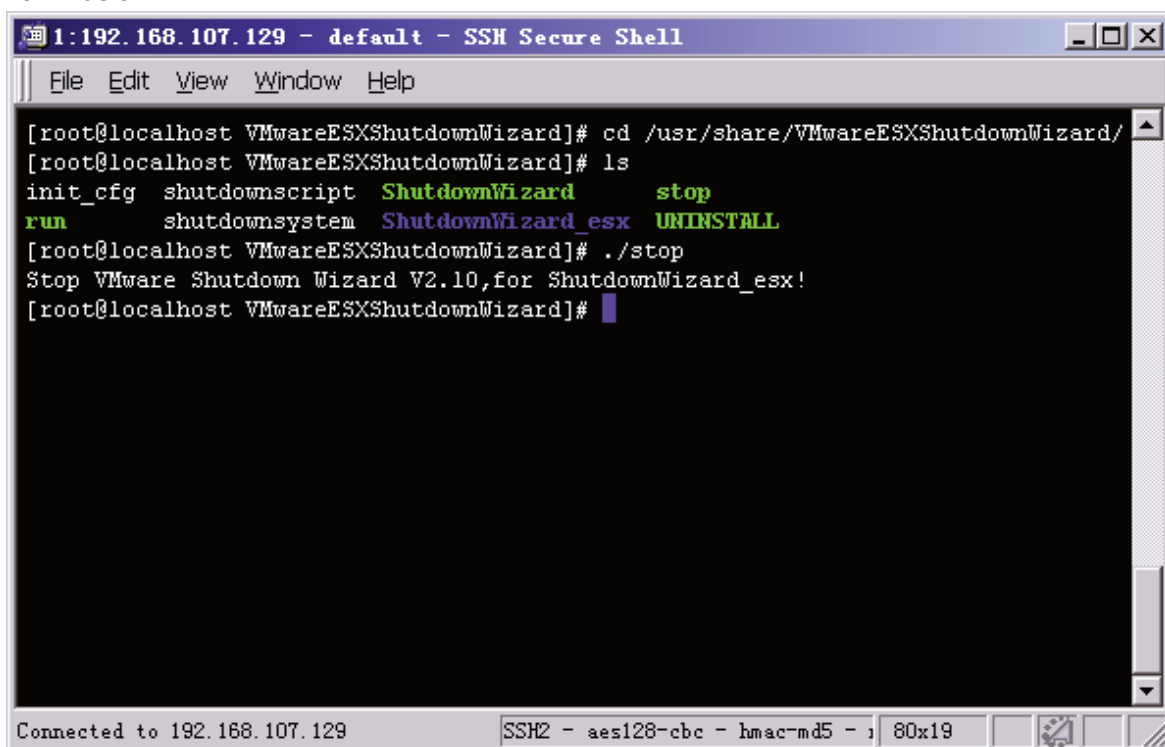


```
1:192.168.107.129 - default - SSH Secure Shell
File Edit View Window Help
[root@localhost VMwareESXShutdownWizard]# cd /usr/share/VMwareESXShutdownWizard/
[root@localhost VMwareESXShutdownWizard]# ls
init_cfg shutdownscript ShutdownWizard stop
run shutdownsystem ShutdownWizard_esx UNINSTALL
[root@localhost VMwareESXShutdownWizard]# ./run
[root@localhost VMwareESXShutdownWizard]# ps -e | grep ShutdownWizard
4839 pts/0 00:00:00 ShutdownWizard
[root@localhost VMwareESXShutdownWizard]#
```

Figure 10.

2-3. Stop

Key in the path of "cd /usr/share/VMwareESXShutdownWizard/" and then, run the command of "./stop" as shown below.

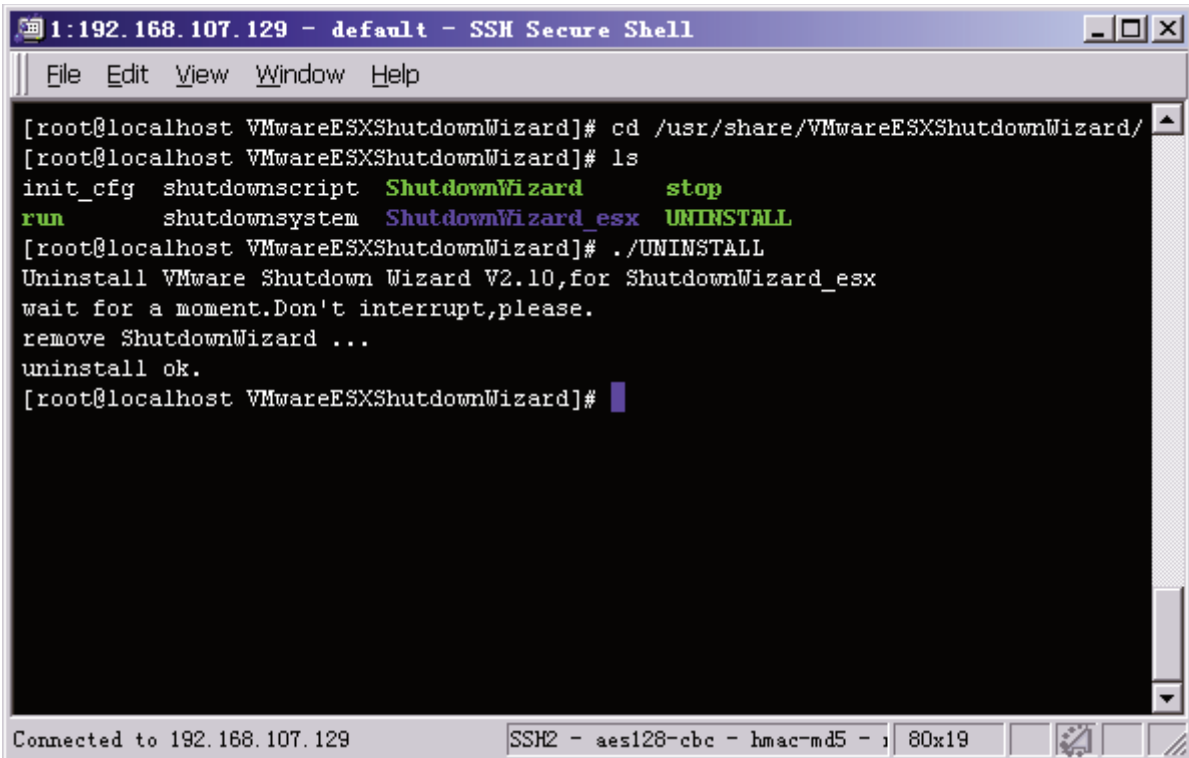


```
1:192.168.107.129 - default - SSH Secure Shell
File Edit View Window Help
[root@localhost VMwareESXShutdownWizard]# cd /usr/share/VMwareESXShutdownWizard/
[root@localhost VMwareESXShutdownWizard]# ls
init_cfg shutdownscript ShutdownWizard stop
run shutdownsystem ShutdownWizard_esx UNINSTALL
[root@localhost VMwareESXShutdownWizard]# ./stop
Stop VMware Shutdown Wizard V2.10,for ShutdownWizard_esx!
[root@localhost VMwareESXShutdownWizard]#
```

Figure 11.

2-4. Uninstall

Key in the path of "cd /usr/share/VMwareESXShutdownWizard/" to enter the installation menu. Then, run the command of "./UNINSTALL" to uninstall the software. (Refer to figure 12)



```
1:192.168.107.129 - default - SSH Secure Shell
File Edit View Window Help
[root@localhost VMwareESXShutdownWizard]# cd /usr/share/VMwareESXShutdownWizard/
[root@localhost VMwareESXShutdownWizard]# ls
init_cfg  shutdownscript  ShutdownWizard  stop
run       shutdownsystem  ShutdownWizard_esx  UNINSTALL
[root@localhost VMwareESXShutdownWizard]# ./UNINSTALL
Uninstall VMware Shutdown Wizard V2.10,for ShutdownWizard_esx
wait for a moment.Don't interrupt,please.
remove ShutdownWizard ...
uninstall ok.
[root@localhost VMwareESXShutdownWizard]#
```

Connected to 192.168.107.129 | SSH2 - aes128-cbc - hmac-md5 - | 80x19

Figure 12